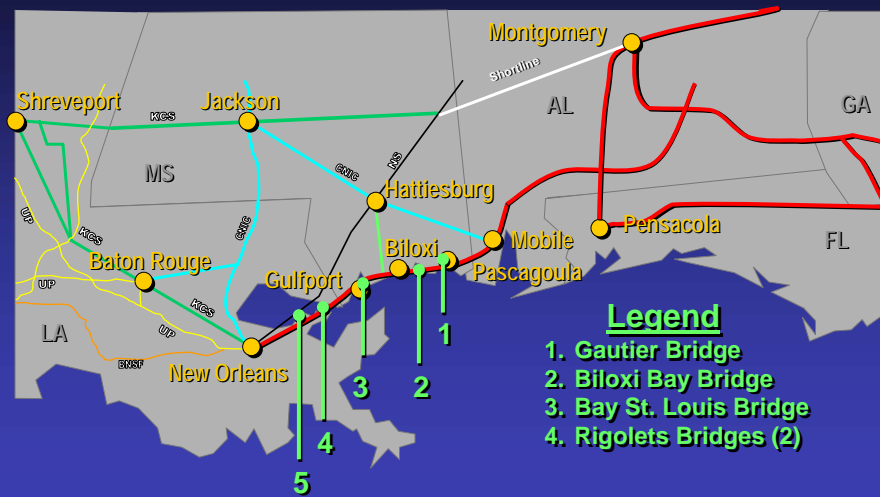




Hurricane Katrina

- Struck east of New Orleans at 0710 hrs on 29 August
- Category 4 Hurricane with heavy rain & destructive winds at 150 mph.
- Major Shoreline Damage from New Orleans MP 803 to Pascagoula MP 706.
 - Damage North from Shoreline through Storm Path

Major Bridge Damage on CSXT Gulf Coast Line



3

Gautier Bridge MP 709.3 2,300 ft.



4



Gautier
MP 709.3 Detail



Bay St. Louis

Bay St. Louis

MP 752.5



Rigolets Pass

MP 775.0

Detail shows track
washed away



12 barges to remove from track MP 662.0



9

Barges MP 662





MP 776

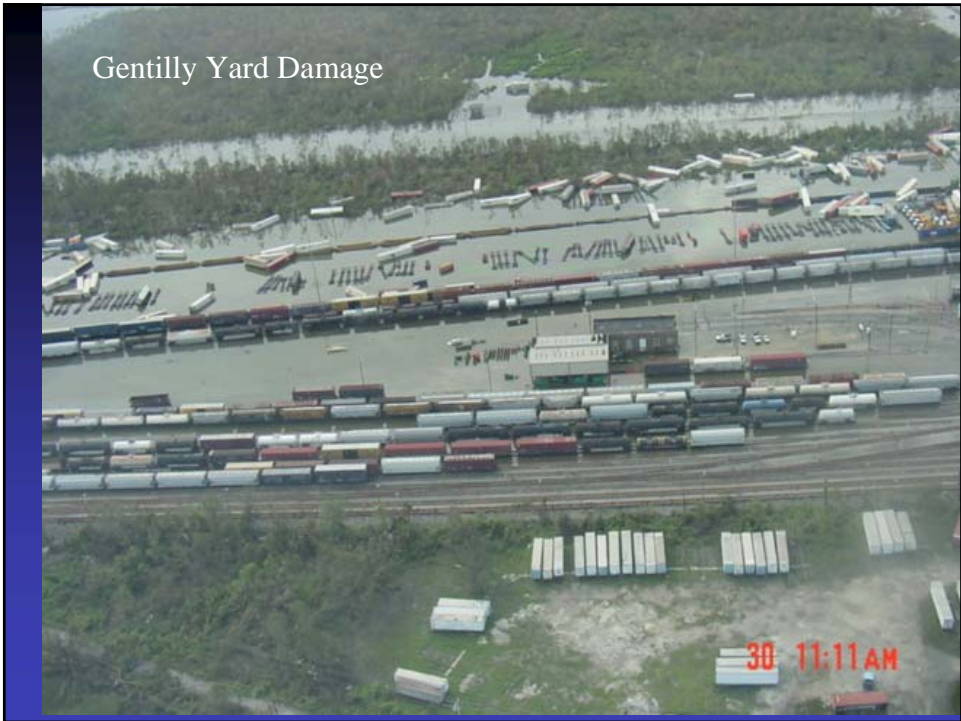


Damaged Track
MP 775.5

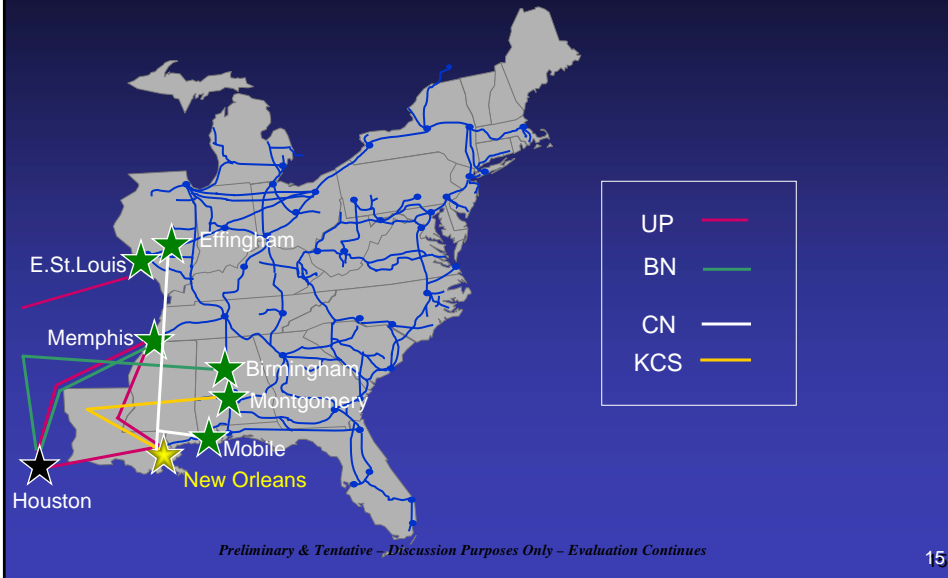
31 2:10 PM



3



Gulf Coast Re-Routes with CSX's Partner Roads



Hurricane Katrina – Site Access / Security



Gulf Coast service restoration is underway

- Track and bridge rehabilitation is underway
- Service has been restored between:
 - Montgomery and Flomaton
 - Mobile and Flomaton
 - Chattahoochee and Pensacola
 - Pensacola and Flomaton
 - Mobile and Pascagoula
- Remaining service restoration expected in phases over the next 6 months



17

Rebuild



18

Rebuild – Bay St. Louis



19

Rebuild – bay St. Louis - East



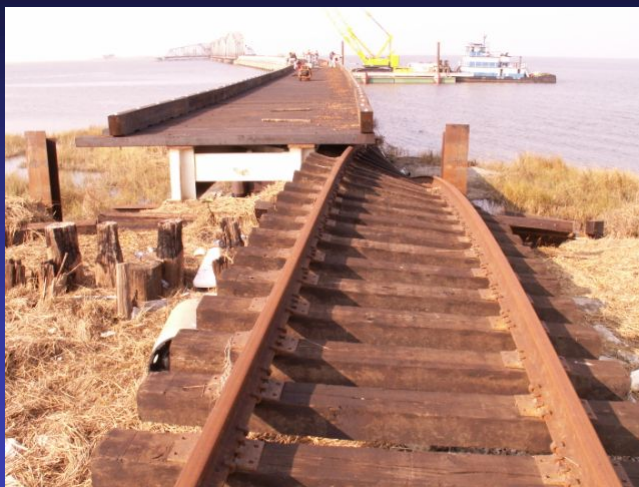
20

Rebuild – Bay St. Louis West



21

Rebuild - Rigolets



22

Relief efforts

