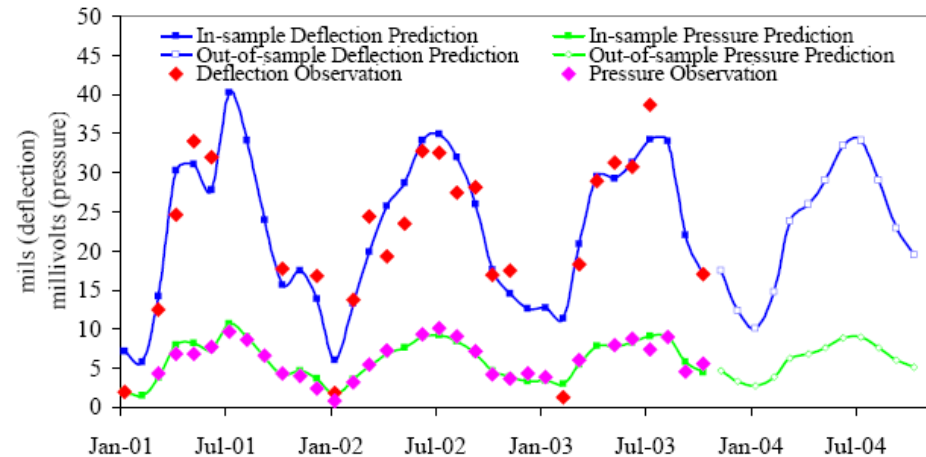


Transportation Center Update

- Education
- Seminars
- Research
- Policy Conferencing
- Executive education
- Going forward



Education



- Transportation & Logistics minor
- Other grad, undergrad programs & activities
- Experiential learning
 - Co-op & internships
- Placement services

Seminars

- Highlights
- Mark Rosenker,
David Neeleman;
Julie Hamos
- Web-distribution:
outreach to BAC &
world
- Sandhouse Gang
- Icarus Society



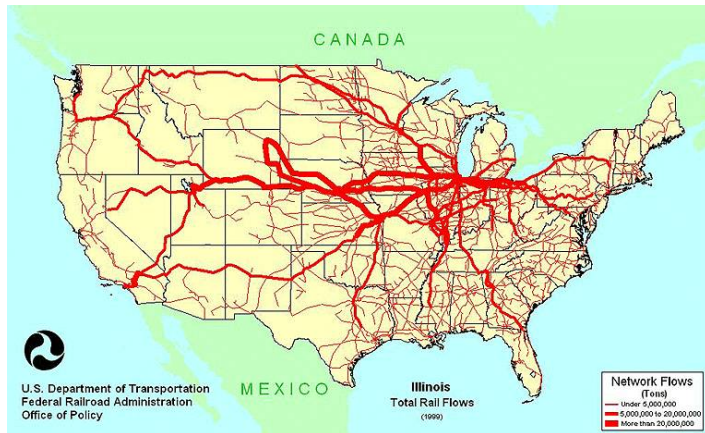
Recent Transportation Seminars

- **Mike Blaszak - Senior Counsel, Earth Tech Inc.** *Reregulation: The Struggle for Prosperity*
- **Chris Hendrickson - Professor of Engineering, Carnegie Mellon Univ.**
Construction and Management Practices on the Boston Central Artery (Big Dig) Project
- **Kenneth P. Laberteaux - Principal Research Engineer, Toyota Technical Center**
Information-Rich Vehicular Safety System
- **Joseph A. Gustin - Deputy Commissioner, Indiana DoT** *Indiana's Public-Private Transportation Initiative*
- **Aaron J. Gellman – Professor, Transportation Center, Management & Strategy and IE/MS, Northwestern Univ.**
Expanding the Panama Canal
- **James Chu - PhD Candidate, Civil and Environmental Engineering & Transportation Center Fellow, Northwestern Univ.** *Dynamic Performance Models for Transportation Infrastructure Management*
- **Chandra Bhat - Professor of Civil Engineering, Univ. of Texas**
Modeling Consumers' Choice of Multiple Items Simultaneously: A Methodological Approach with Application
- **Piyapong Jiwattanakupaisarn - PhD student, Centre for Transport Studies, Imperial College London**
Transport Infrastructure Investment and Its Effects on Employment: Theoretical Linkages, Estimation Issues,
- **Guangming Zhang - PhD Candidate, Industrial Engineering & Management Science and Transportation Center Fellow, Northwestern University** *Operational Flexibility in Drayage Vehicle Routing*
- **Martin Savelsbergh- Professor, School of Industrial and Engineering Systems, Georgia Institute of Technology** *Analysis of Dispatch Policies for a Dynamic Multi-Period Routing Problem*
- **Mark Daskin – Professor, Industrial Engineering & Management Sciences, Northwestern Univ.**
Supply Chain Design to Mitigate Disruption Impacts
- **Hani S. Mahmassani - Professor Civil & Environmental Engineering, Univ. of Maryland**
Real-Time Transportation Network Decision-Making: Pricing, Auctions, and Learning Dynamics

Research Activities & Initiatives

- BAC research survey – connections & directions
 - Doug Hagestad & Matt Cuddy
 - Connect to our strengths; Backed with seed money
 - Today's panel: a beginning
- Faculty research activities
 - Continuing joint efforts between KSM & McCormick: logistics, managing disruptions (Daskin, Chopra, others)
 - IE/MS Carry Transit study (Homem de Mello, Smilowitz, Daskin)
 - Route optimization, customer scheduling incentives
 - FHWA solicitation – 2 multi-disciplinary responses, partnerships
- Student projects (undergraduate & graduate)
 - IE/MS Ingram Barge routing study
 - Many models: summer, co-op, undergrad projects, PhD internships, PhD dissertations...

Policy Studies



- ITI-TC Congestion Conference (10/15/07)
 - Linked to BAC research priorities
 - Partner with Infrastructure Technology Institute



- Support for CREATE
- TRB transportation data initiatives
- FAA ATC policy

Executive Education

- Gellman: pricing workshop – Panama Canal Authority
- Collaboration with KSM executive programs – supply chain finance
- Pipeline management course – market opportunity?
- Others?



Going Forward



- BAC & government connections
 - Value proposition
 - Collaborations
 - Exchange visits, sabbaticals
 - Internships, co-op
- Grow transportation research
 - Broad view – students, faculty, collaborations
- Interdisciplinary focus
- Targeted staff growth
- Strategic faculty hires
 - Beyond Patterson chair⁸